

Mech-Eye Laser L 激光3D相机

具备优异的抗环境光性能

高精度 | 大视野 | 高速度 | 稳定可靠 | 开放易用 | 性价比高



相机参数

推荐工作距离范围 (mm) : 1500 - 3000 mm

近端视场: 1500 × 1200 mm @ 1.5 m

远端视场: 3000 × 2400 mm @ 3.0 m

分辨率: 2048 × 1536

像素数: 3.0 MP

工作温度范围: -10 - 45°C

通讯接口: 以太网

激光安全等级: Class 2 (可选) / Class 3R (默认)

开发接口: C++/Python/C#/GenICam/HALCON

防护等级: IP65

标定精度: 1.0 mm @ 3 m

Z向重复精度 (σ): 0.5 mm @ 3 m

典型采集时间: 0.5 - 0.9 s

外形尺寸: 459 × 89 × 145 mm

重量: 3.7 kg

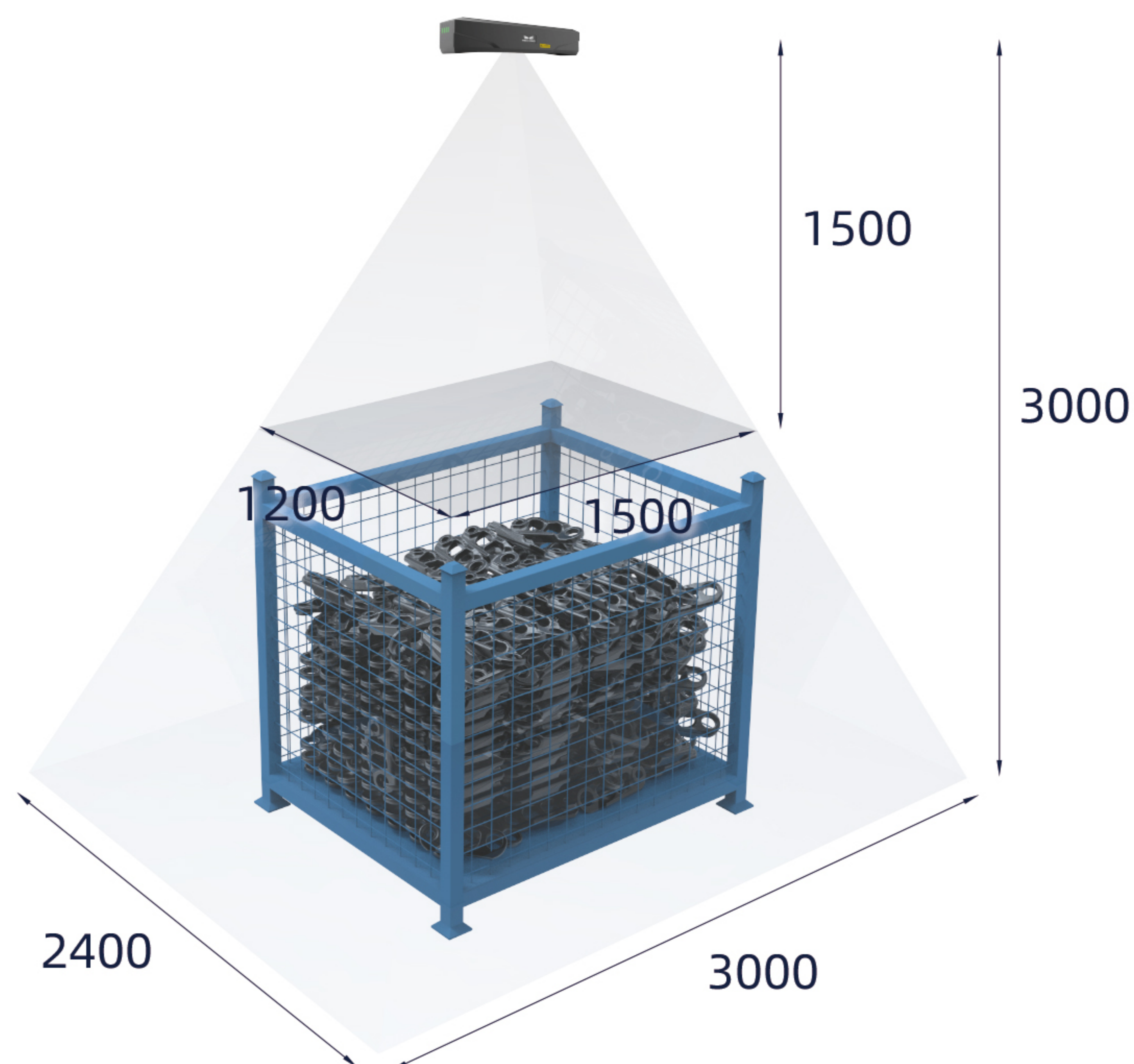
基线长度: 400 mm

工作电压: 24V DC

安全和电磁兼容: CE/FCC/VCCI

散热: 被动散热

视野图 (mm)



抗环境光对比试验

Mech-Eye Laser 与其他典型3D相机

试验在实际厂房典型光照下进行(> 15000lx)

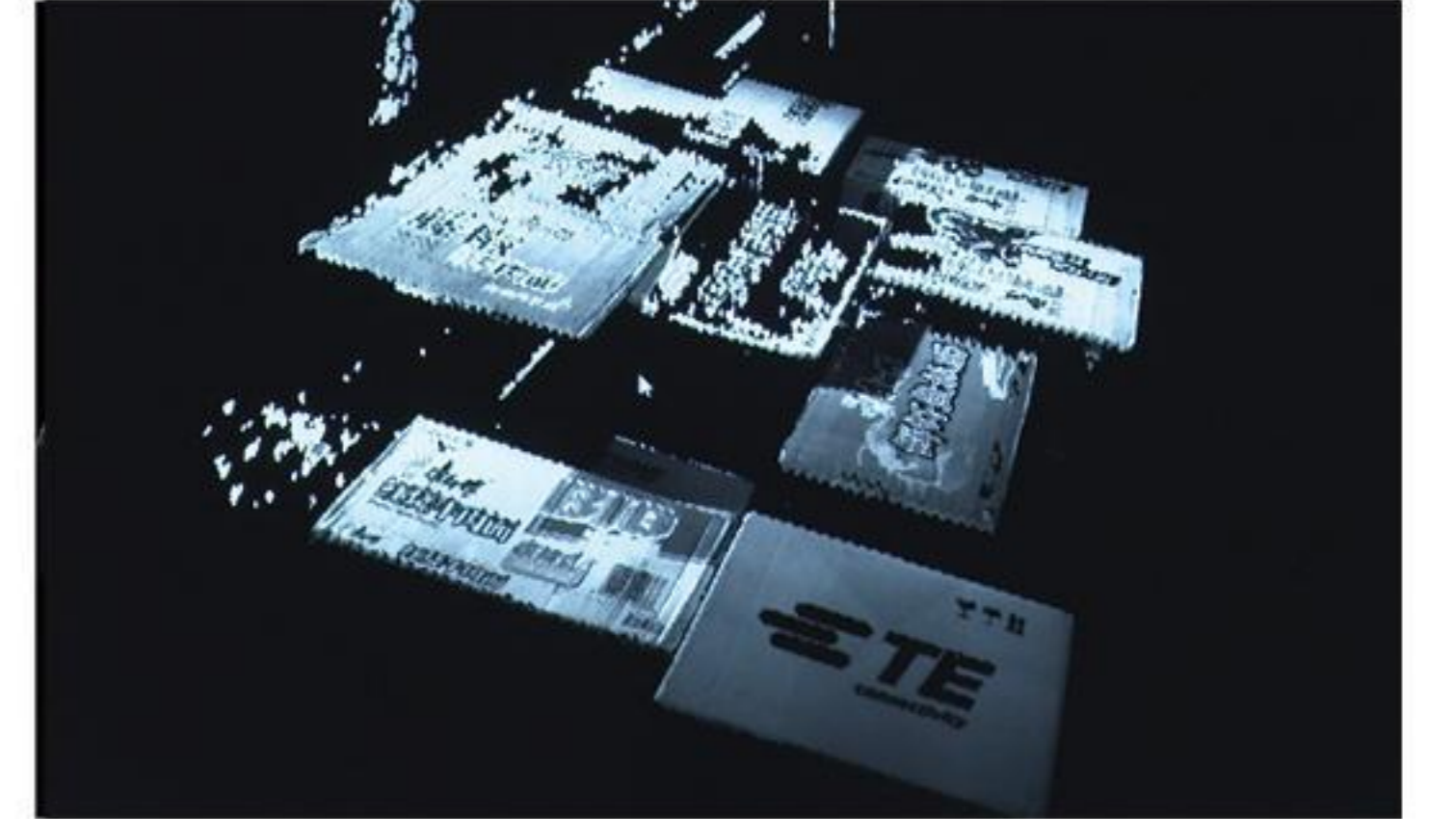
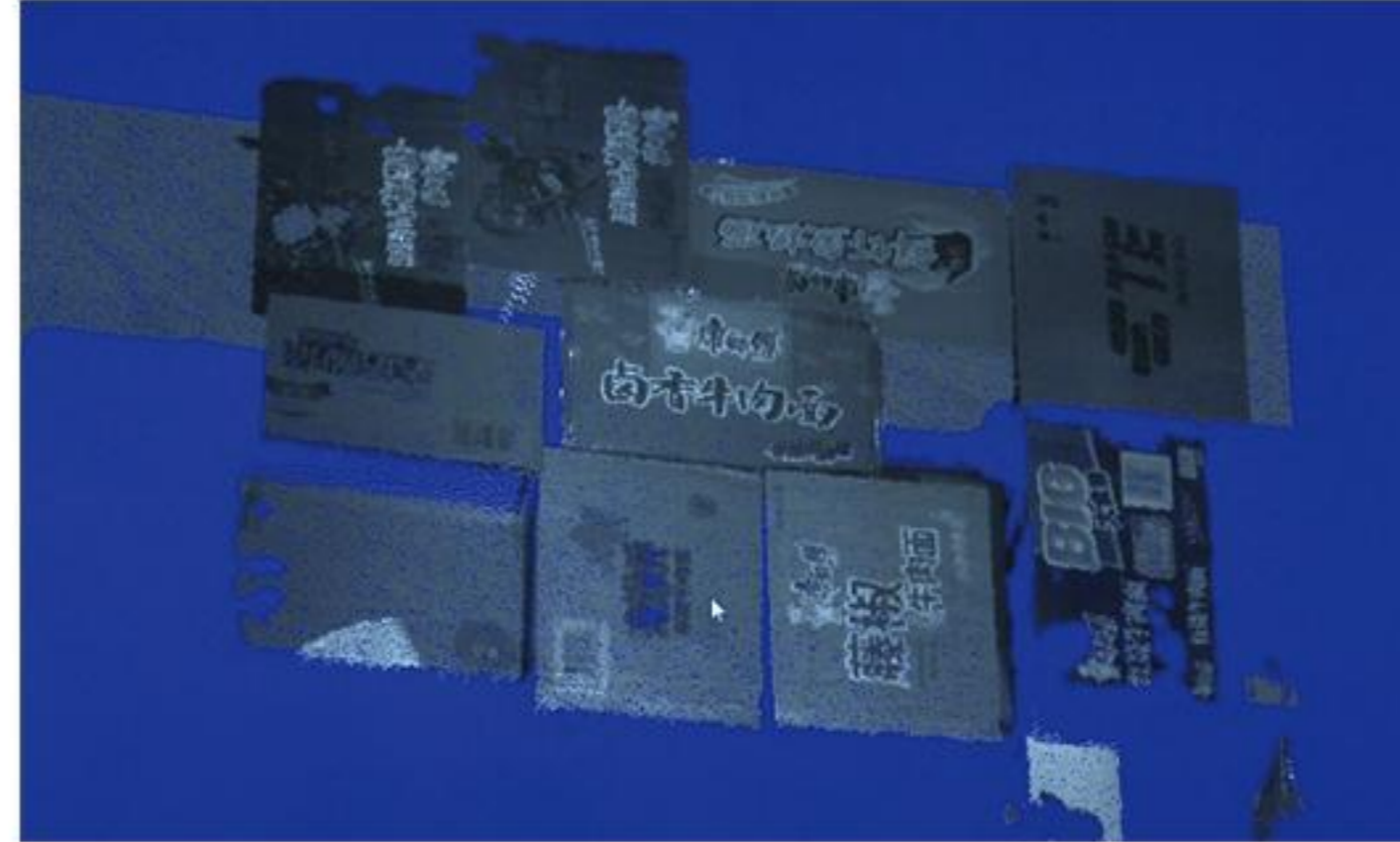
抗环境光性能与物体材质有关；强反光物体成像对环境光更敏感。

Mech-Eye laser

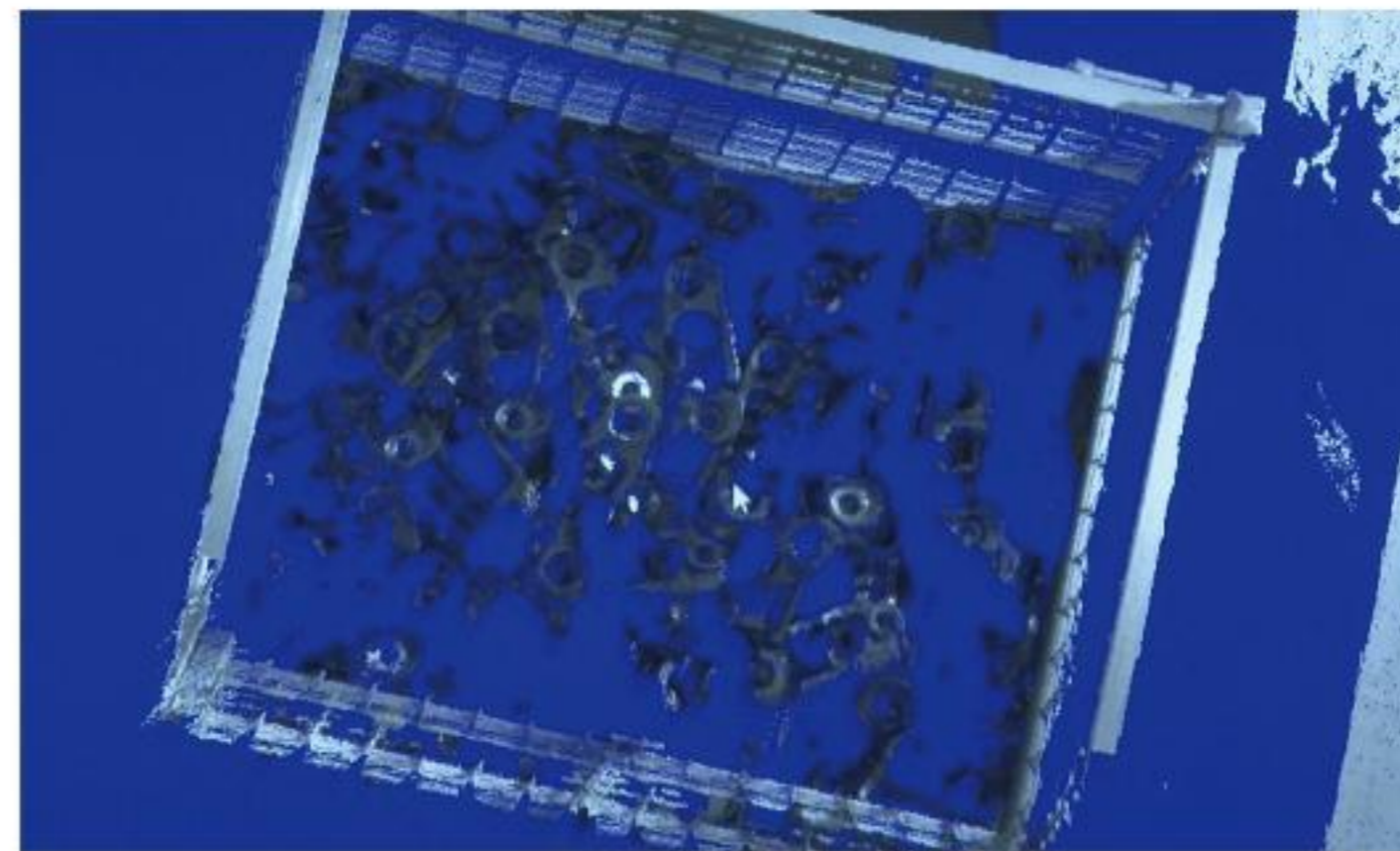
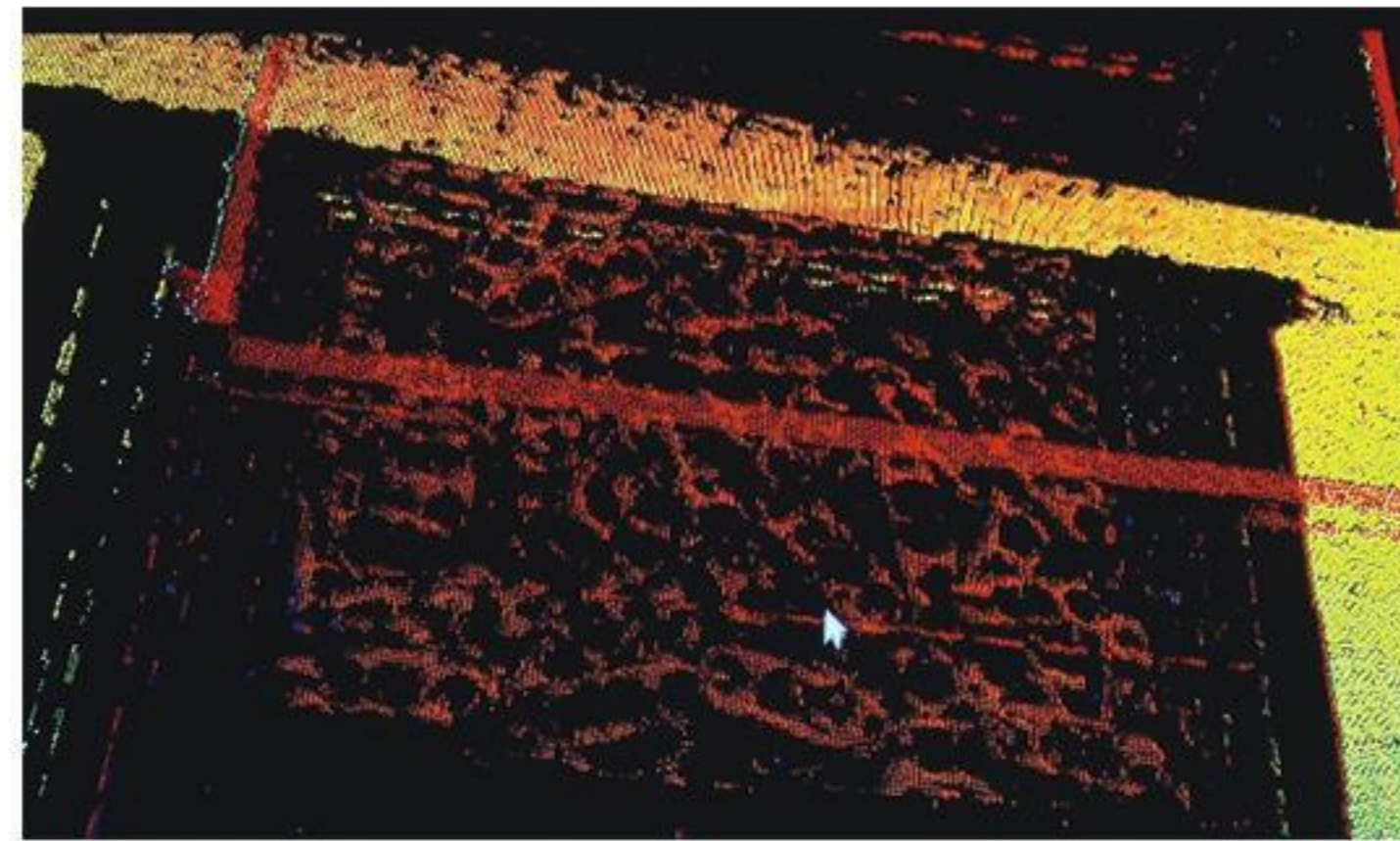
其他相机A

其他相机B

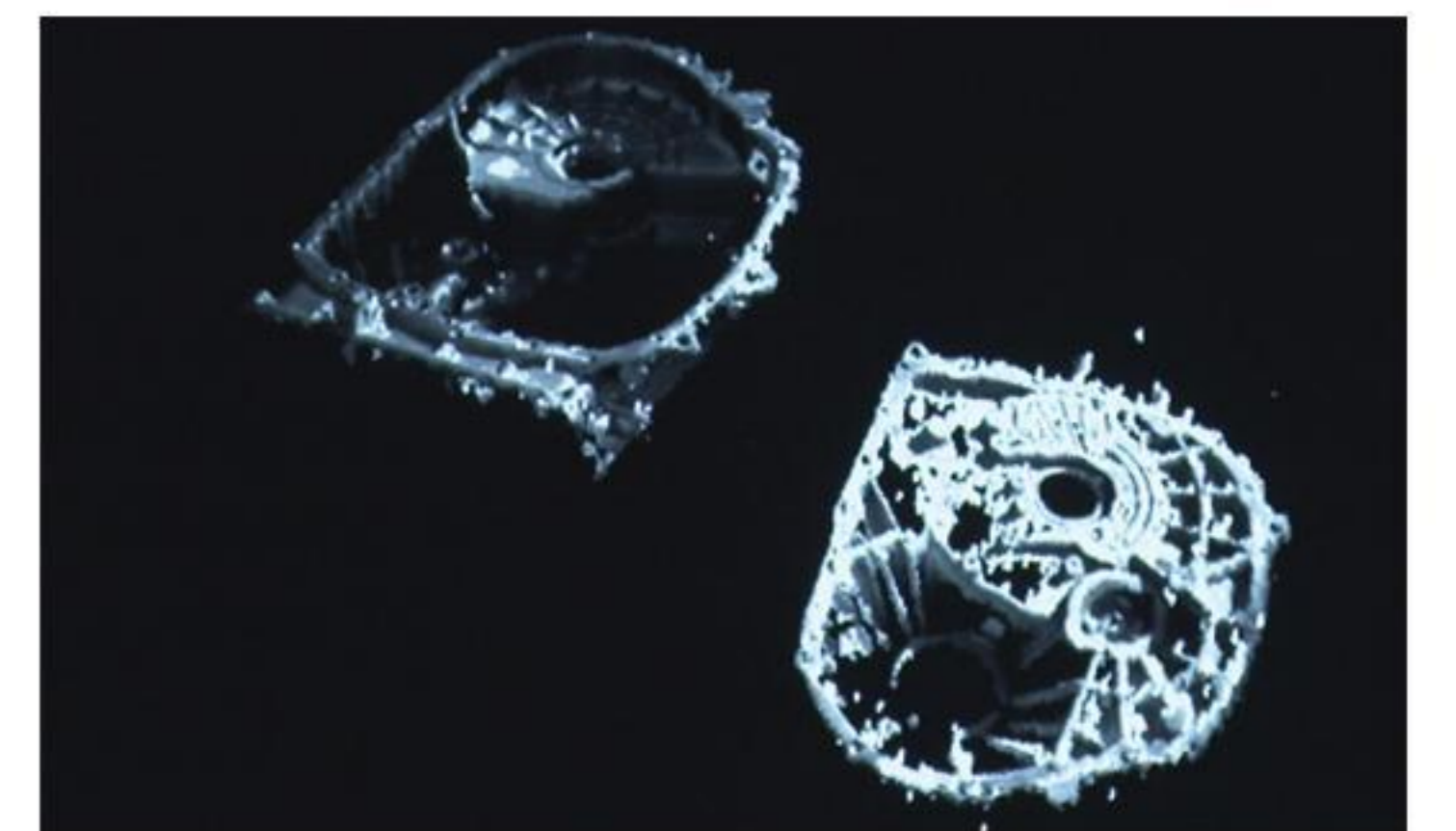
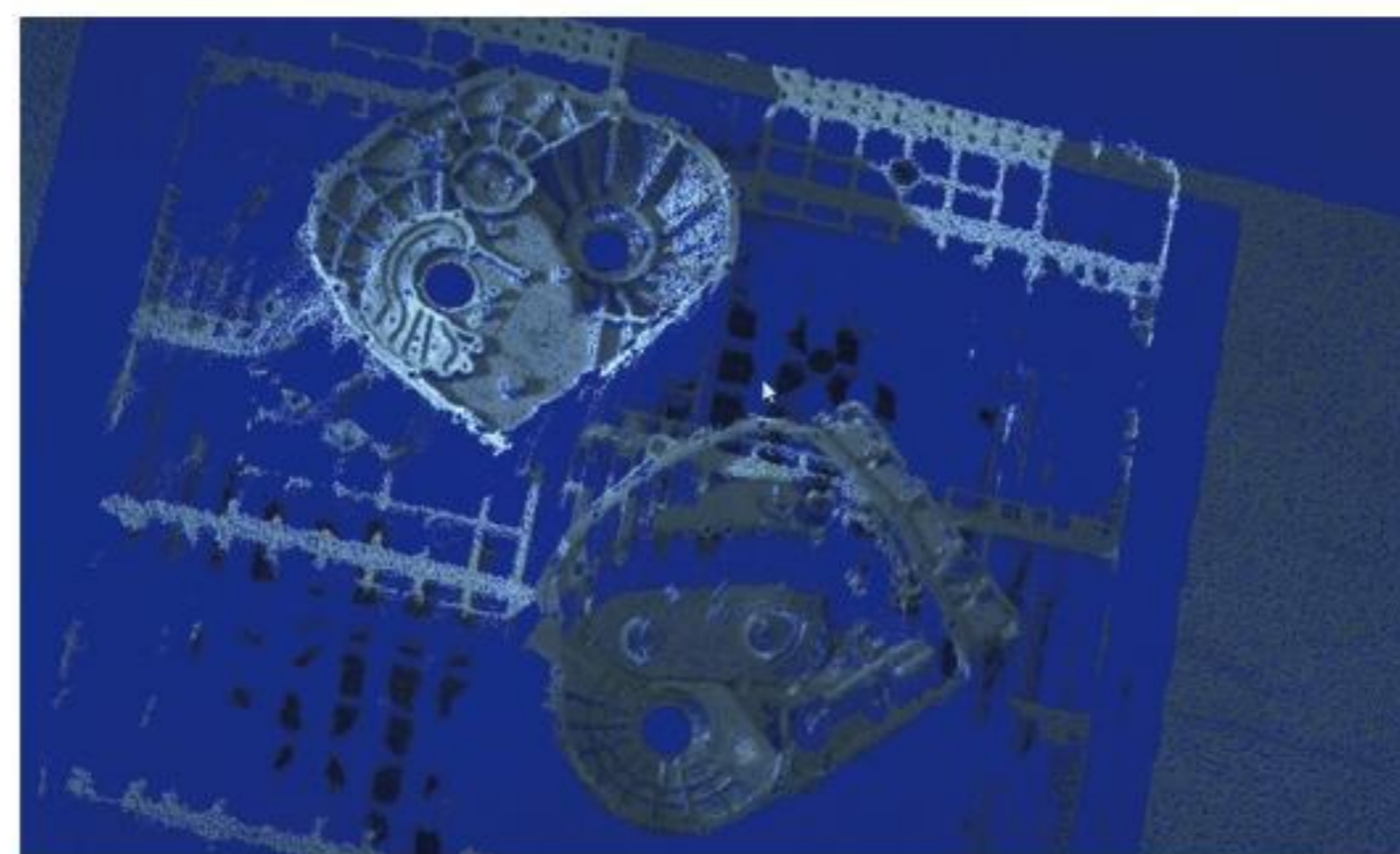
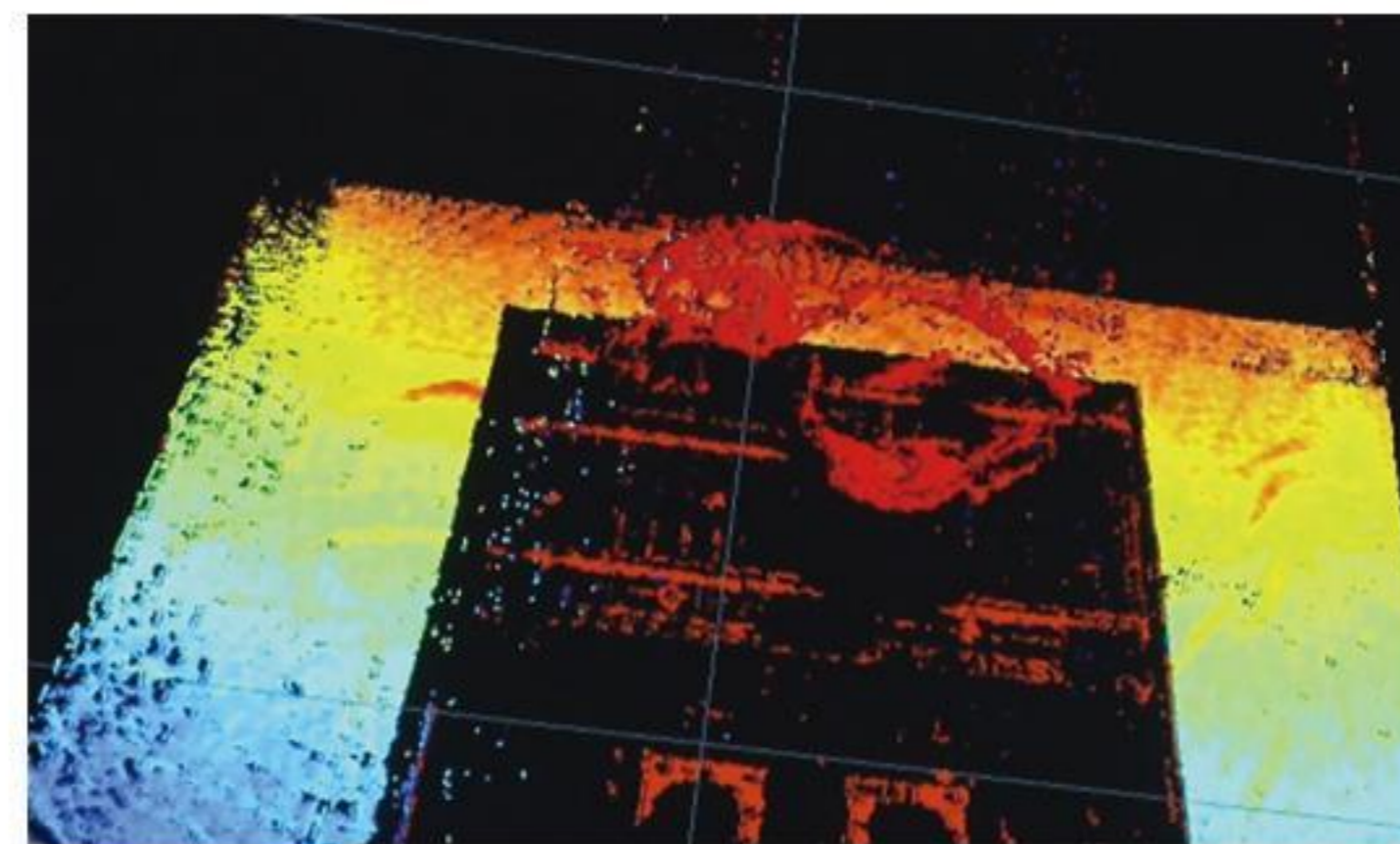
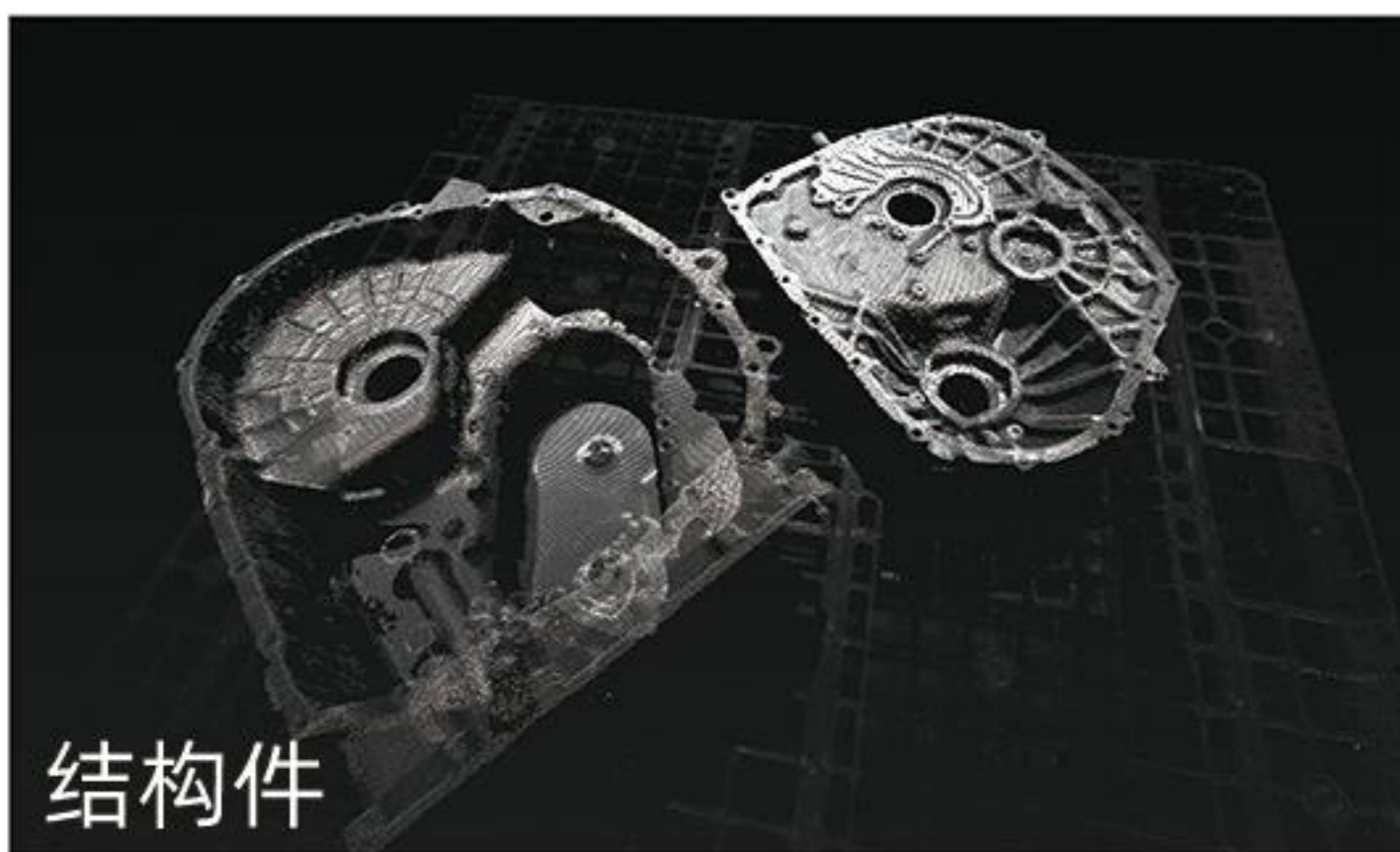
其他相机C



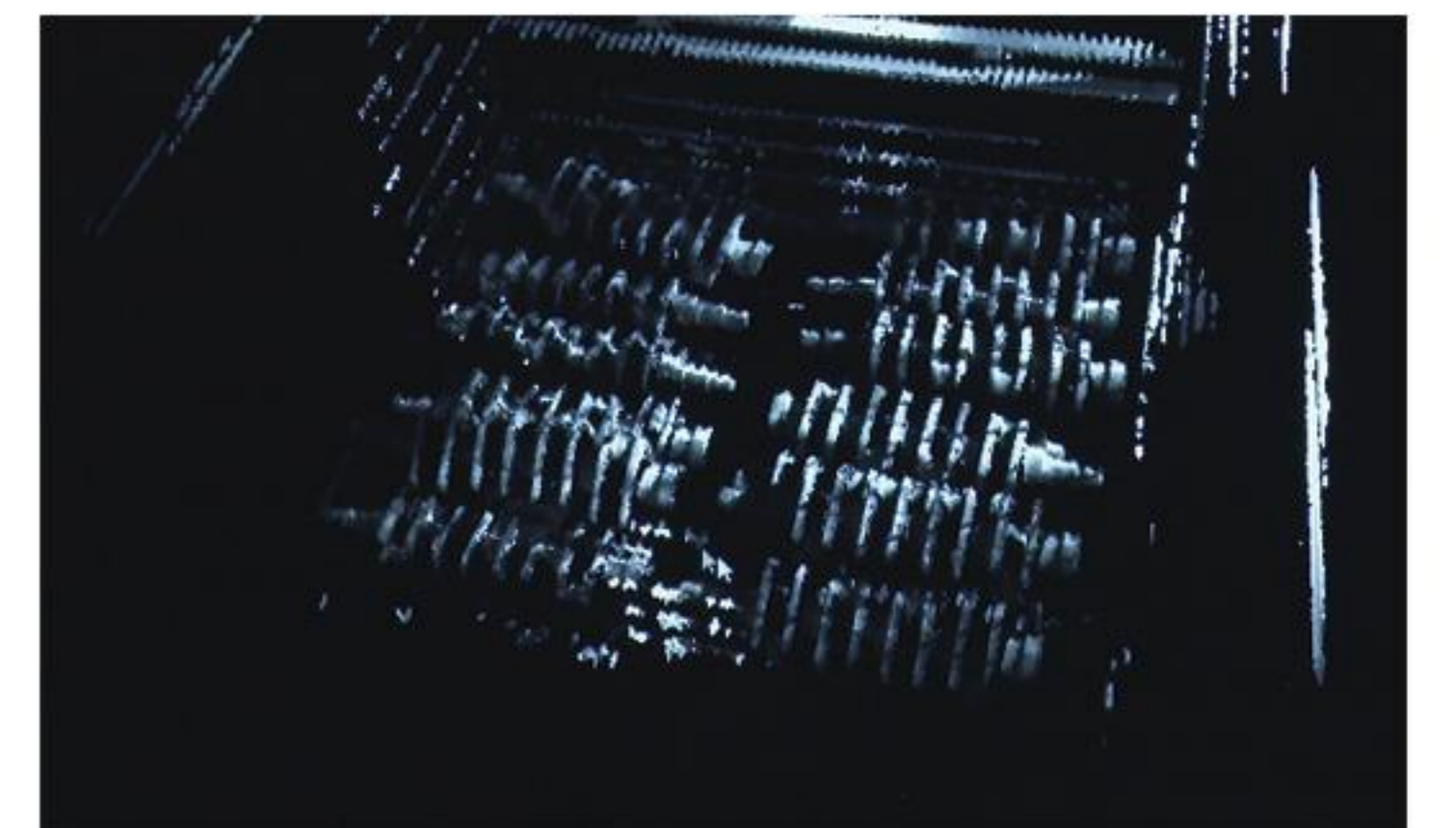
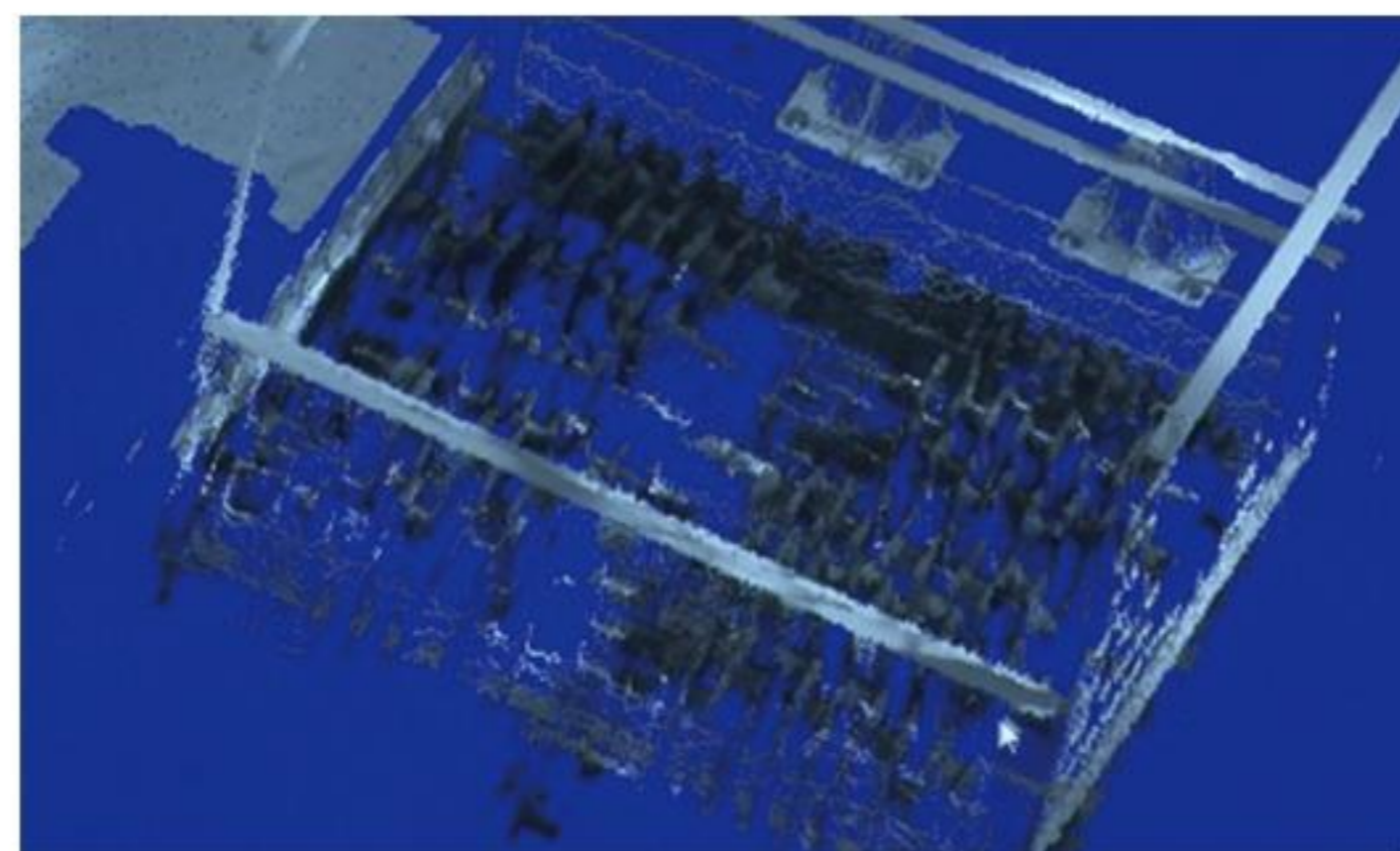
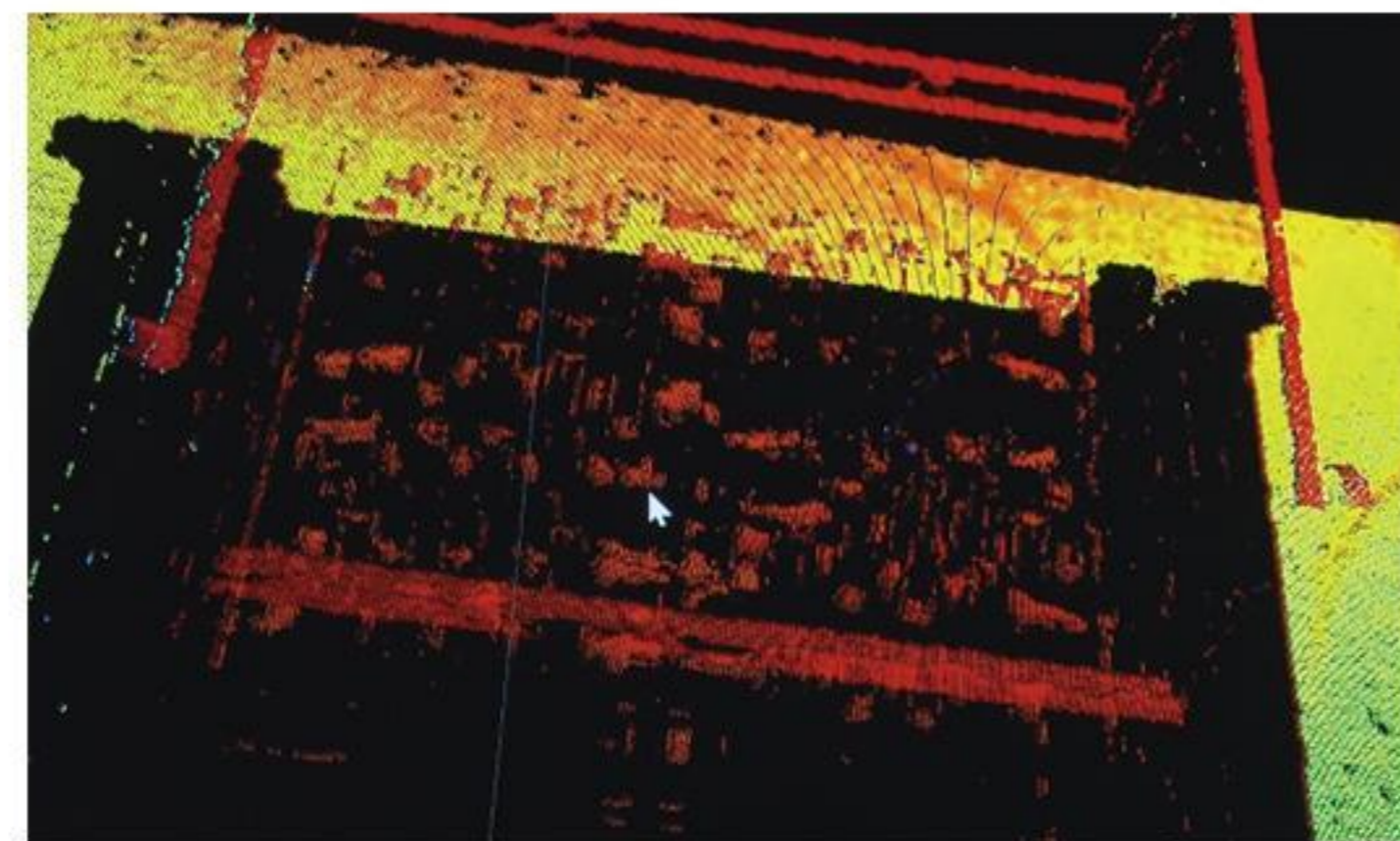
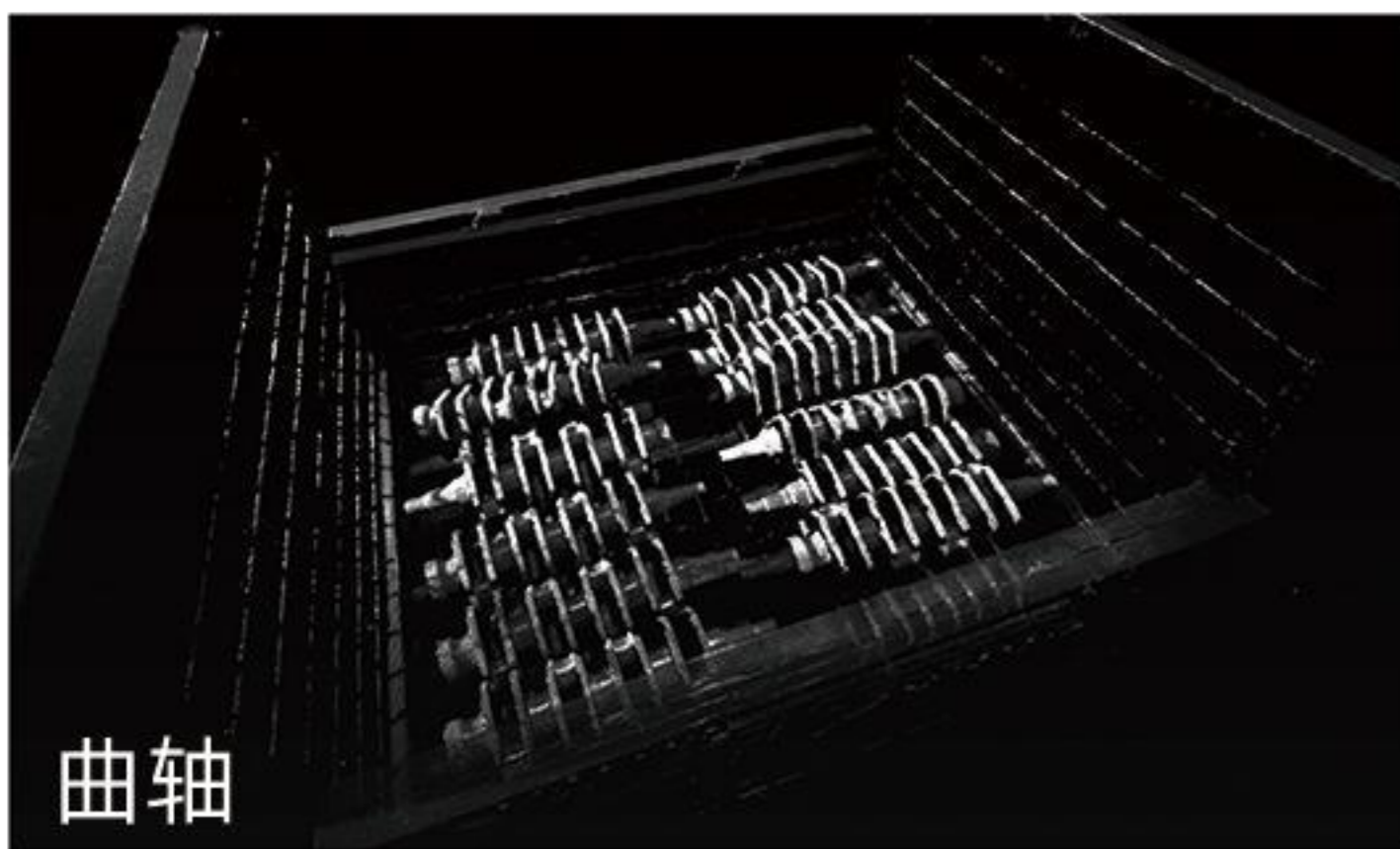
纸箱



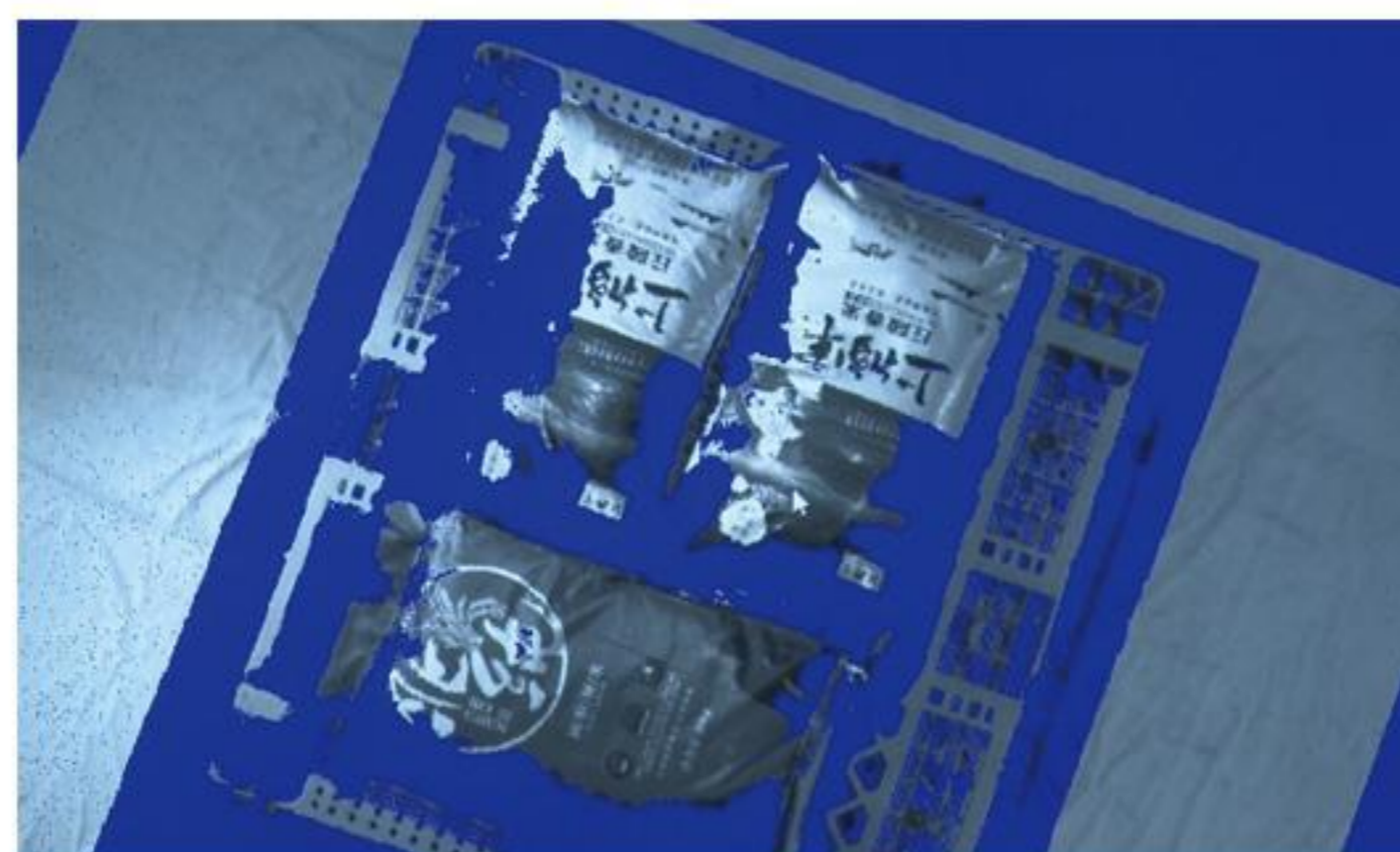
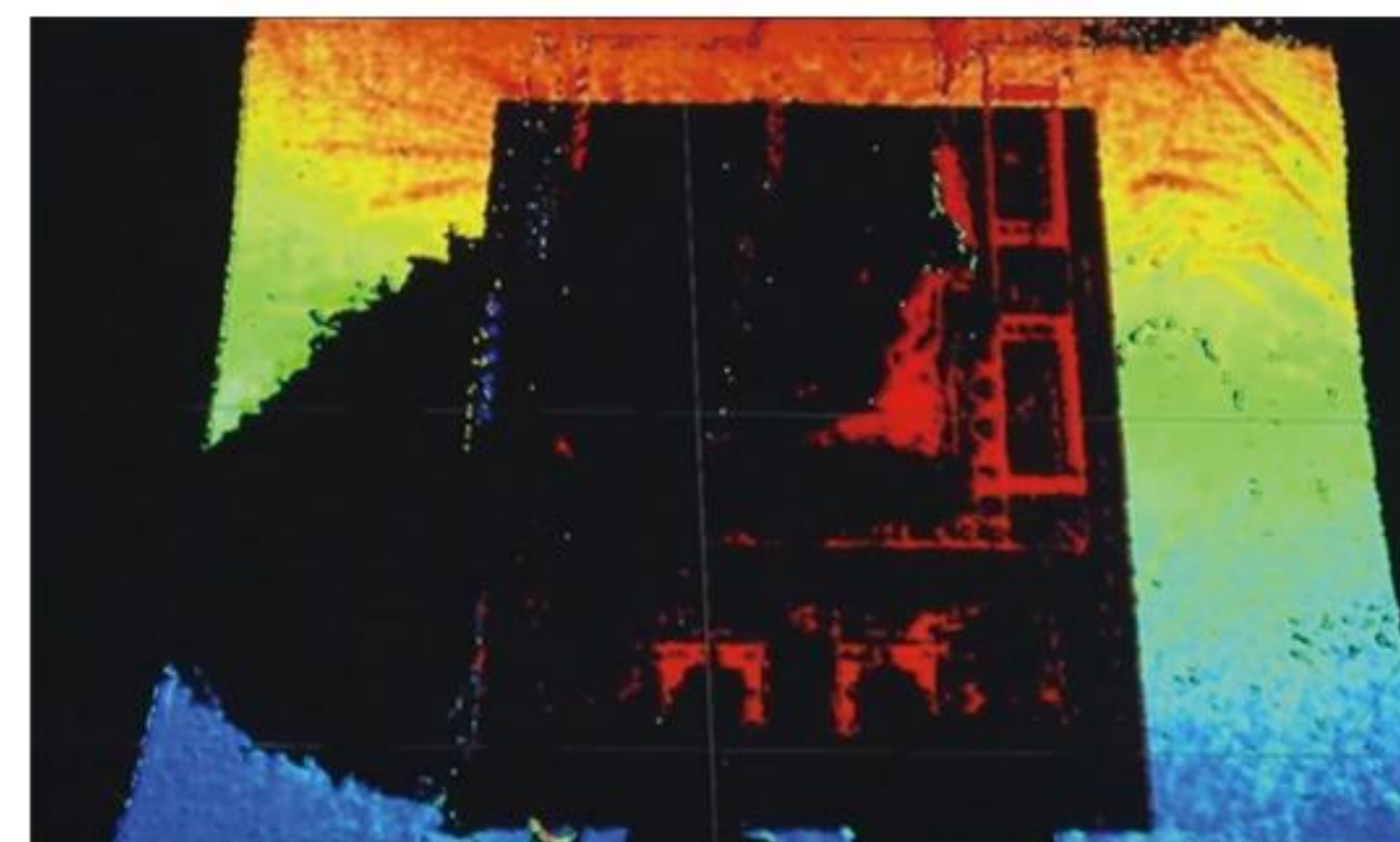
链轨节



结构件



曲轴



麻袋

适用于制造业车间、物流仓储、建筑、钢铁等领域中易被环境光干扰的多种场景

