

DWG.NO. HW1382421

9dia. mounting hole (4places)

4 Air inlets:
Tapped hole M5 (4places)
with pipe plug

Tapped hole M8 (3places),
Depth: 16mm, Pitch: 1.25mm

Connector for internal user I/O wiring harness:
RM15WTRZ-12P (72) (pin connector).
Prepare socket connector: RM15WTPZA-12S*HIROSE*

4 Air inlets:
Tapped hole M5 (4places)
with pipe plug

Connector for internal user I/O wiring harness:
HR10A-10R-12P (pin connector).
Prepare socket connector: HR10A-10P-12S*HIROSE*
The port for a robot bashful air intake (O.D.34mm)
Prepare air duct (I.D.34mm)

Detail B (Scale 1:5)

View C (Scale 1:6)

P-Point maximum envelope

99.5 99.5
68 68

FOR STUDY PURPOSE ONLY

Internal user I/O Wiring harness: 0.2mm², 10wires

Internal user I/O Wiring harness: 0.2mm², 10wires

Pins used

Pins used

Details of the Connector Pin Numbers (Base Side)

Details of the Connector Pin Numbers (Casing Side)

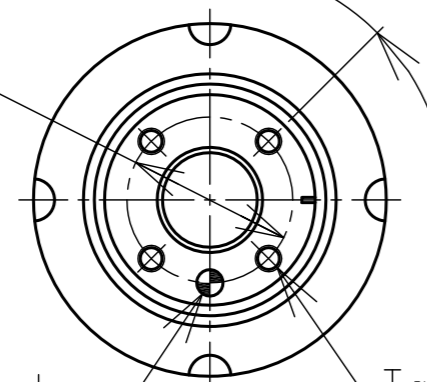
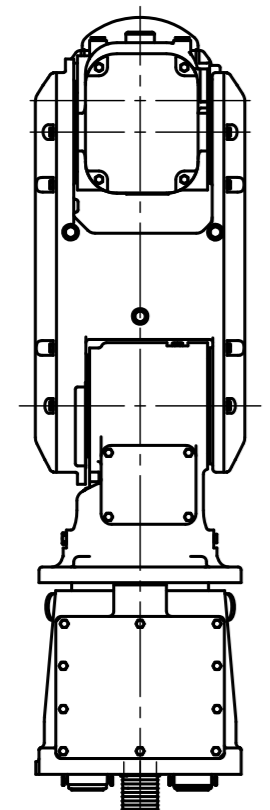
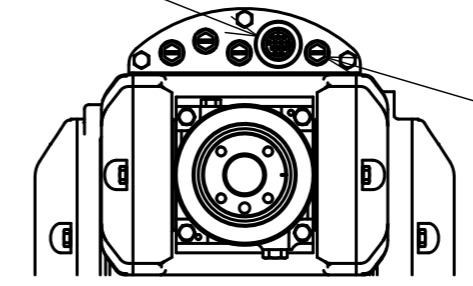
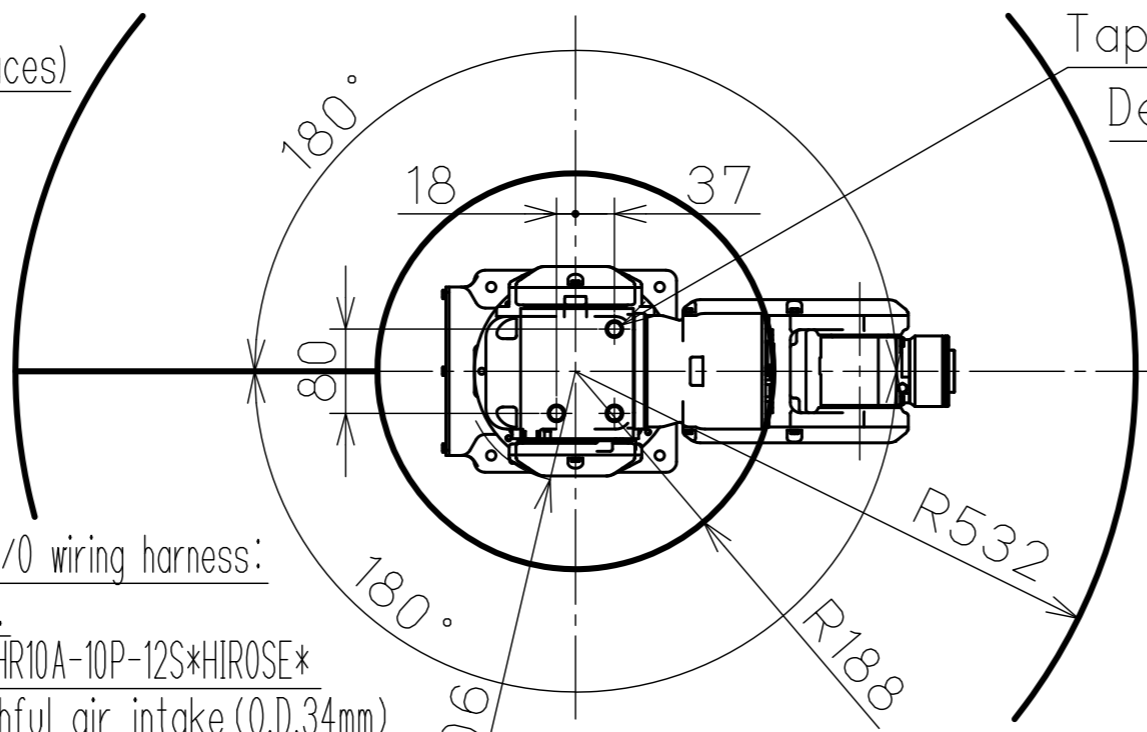
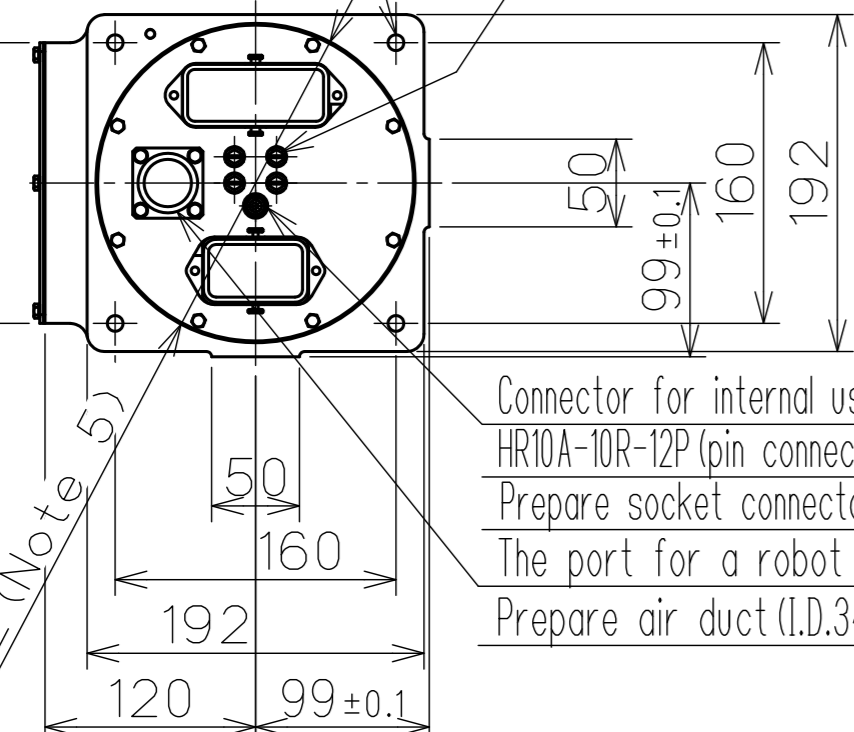
Item	Model	MOTOMAN-MH3BM
Configuration		Vertically Articulated
Degree of Freedom		6
Payload		3kg
Repeatability		±0.03mm [Note1]
Range of Motion	S-Axis (Turning)	-180° ~ +180°
	L-Axis (Lower Arm)	-85° ~ +90°
	U-Axis (Upper Arm)	-105° ~ +260°
	R-Axis (Wrist Roll)	-170° ~ +170°
	B-Axis (Wrist Pitch/Tow)	-120° ~ +120°
T-Axis (Wrist Twist)		-360° ~ +360°
Maximum Speed	S-Axis	5.41rad/s, 310°/s
	L-Axis	2.62rad/s, 150°/s
	U-Axis	3.32rad/s, 190°/s
	R-Axis	5.24rad/s, 300°/s
	B-Axis	5.24rad/s, 300°/s
T-Axis		7.33rad/s, 420°/s
Allowable Moment	R-Axis	5.39N·m (0.55kgf·m)
	B-Axis	5.39N·m (0.55kgf·m)
	T-Axis	2.94N·m (0.3 kgf·m)
Allowable Inertia (GD ² /4)	R-Axis	0.10 kg·m ²
	B-Axis	0.10 kg·m ²
	T-Axis	0.03 kg ² m
Approx. Mass		31kg
Cleanliness Class		ISO CLASS 5 [Note4]
Ambient Conditions	Temperature	0 to 40°C
	Humidity	20 to 80%RH (at constant temperature)
	Vibration Acceleration	Less than 4.9m/s ² (0.5G)
	Others	•Free from corrosive gas or liquid, or explosive gas. •Free from water, oil, or dust. •Free from excessive electrical noise (plasma).
Power Requirements		0.5KVA

Note:

- SI units are used in the table. However, gravitational units are used in (). Repeatability is conformed to ISO 9283.
- Shows the LU-axis working envelope within the range of S-axis motion: -40° to 40°.
- Shows the LU-axis working envelope within the range of S-axis motion: -180° to -125° or 125° to 180°.
- Cleanliness class is conformed to ISO 14644. Under the condition that the manipulator is in the downflow of 0.4m/s or more in a vertically rectified state and the suction from the suction port connector base.
- It recommends that the hole diameter for connector passage of stand which attaches a manipulator shall be 182-188mm.

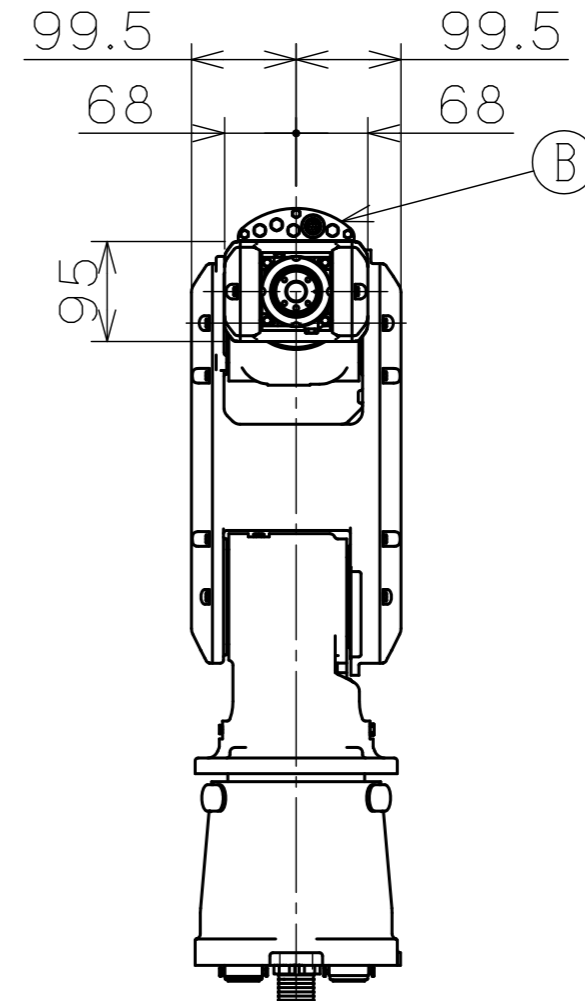
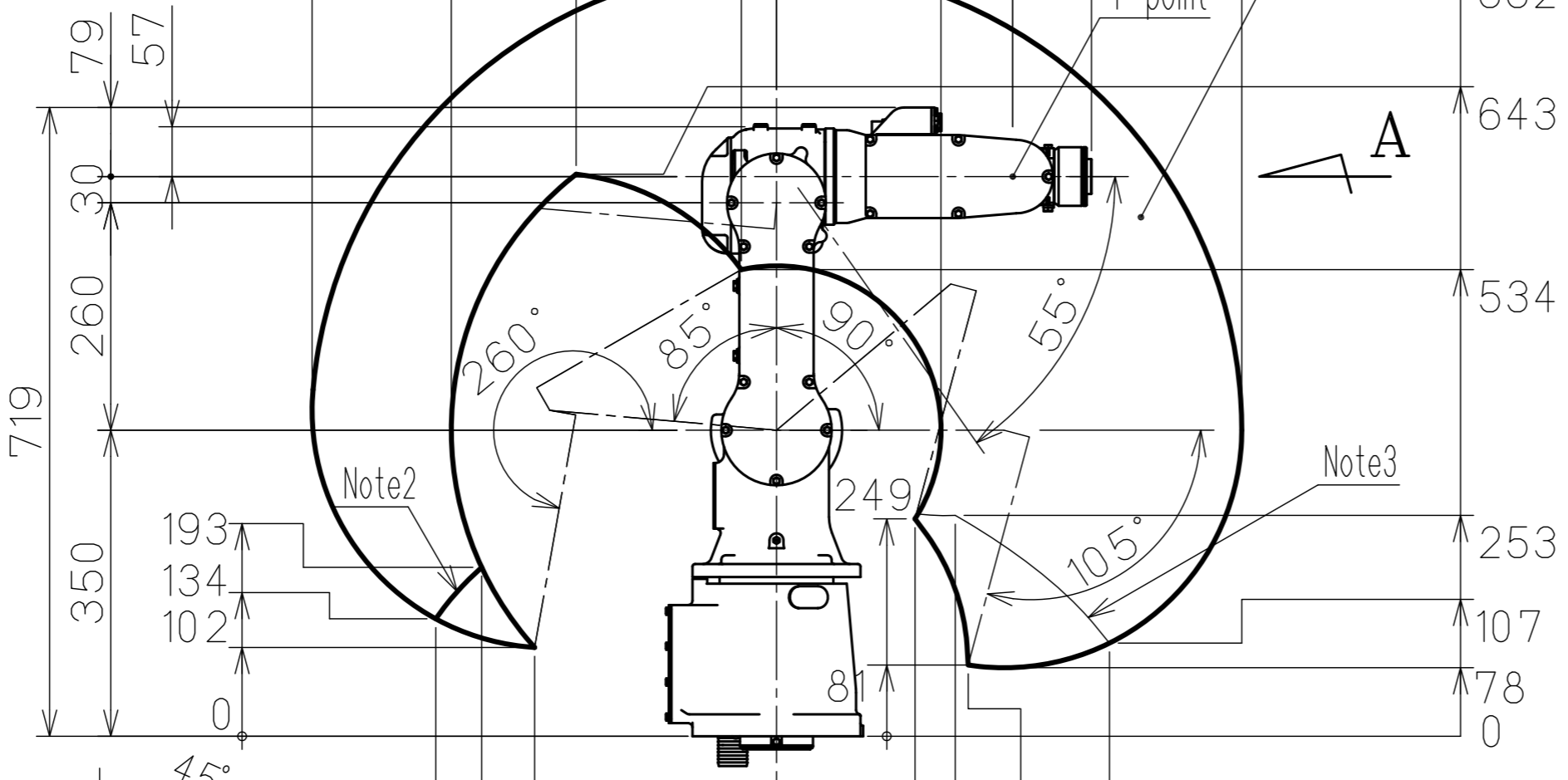
This drawing is applicable with following type.

Type	Note
YR-MH03BM-A00	Standard

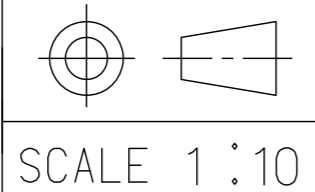


Tapped hole M5 (4places),
Depth: 9mm, Pitch: 0.8mm

View A (Scale 1:2)



Note:
1. All rights reserved.
2. Please note that the data is subject to be deleted without advance notice.
3. No warranty is given in relation to the data including the specification.
4. We are not responsible for any damages or loss caused by the use of the data.



YASKAWA
株式会社 安川電機

Reference Drawing

TITLE MOTOMAN-MH3BM
DIMENSION DIAGRAM

DWG.NO. HW1382421

SIZE A3